

No matter
Who you are
where you
come from,

You can
Design
your
Future

@

POLOKWANE TECHNOLOGY INSTITUTE

WHERE TO FIND US

MAP TO POLOKWANE TECHNOLOGY INSTITUTE:

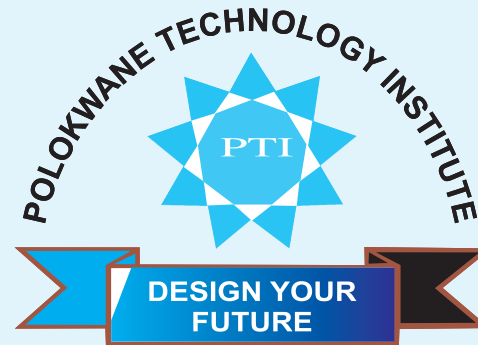
POLOKWANE CAMPUS



BURGERSFORT CAMPUS



POLOKWANE TECHNOLOGY INSTITUTE (PTY) LTD IS ACCREDITED BY
UMALUSI - 17 FET02 00115 PA. AND REGISTERED AS PRIVATE FET WITH
DEPARTMENT OF HIGHER EDUCATION/ TRAINING OF SOUTH AFRICA.
2013/FE07/004



**POLOKWANE TECHNOLOGY
INSTITUTE**

College Prospectus

**REGISTERED EDUCATION & TRAINING
SERVICE PROVIDER**

DEPARTMENT OF EDUCATION REG. NO: 2013/FE07/004
UMALUSI ACCREDITATION NO: 17 FET02 00115
EXAMINATION CENTRE NO: 0799990751, 0699992627
POLOKWANE QCTO ACCREDITATION: QCTO NATED/13/0043
BURGERSFORT QCTO ACCREDITATION: SDP1224/18/00111
MICT SETA NO: ACC/2017/09/0014

POLOKWANE CAMPUS

1004 SANTAM BUILDING

18B THABO MBEKI CNR LANDROS MARES STREET, POLOKWANE

BURGERSFORT CAMPUS

NO 60 MARONE STREET, OLD CHOICE SUPERMARKET
BUILDING, OPP MORONE SHOPPING COMPLEX, BURGERSFORT, 1150

TEL: 015 295 7862, 013 231 7341, FAX: 086 724 1036

P.O BOX 6263, POLOKWANE NORTH 0750

24 HRS CALL CENTER: 0724917557, 0663714699

REGISTER ONLINE @ OUR STUDENT LINK ON

Website: www.polokwanetechnology.co.za

Email: info@polokwanetechnology.co.za

POLOKWANE TECHNOLOGY INSTITUTE (PTY) LTD is a private FET College, established in 2010, offering quality training and education under the Further Education and Training (FET) band. We presently have the main campus in Polokwane and a satellite campus just accredited in Burgersfort (Tubatse) with a wide variety of career opportunities to choose from.

Our campuses are located in the heart of Polokwane/ Burgersfort, with easy access to transport, shopping centers and recreational facilities. We offer NATED (N1-N6) courses at affordable rates, which are aligned at the National Qualifications Framework (NQF). Certificates are issued by the National Department of Education and Training upon passing subjects at that level. Diplomas are also issued by the Department on successful completion of N6 and relevant working experience of 18 months for management programs and 2 years for engineering programs.

Most of our courses require learners to have a grade 12 / standard 10 certificates, or equivalent. Learners who do not possess the qualifications may be admitted on the basis of experience obtained and/or under the recognition of prior learning (RPL) program. Contact our Administration office for more information

ADMISSION REQUIREMENTS:

Ensure that you have submitted the following:

Certified copies of relevant previous qualifications
Copy of your identity Document/Passport/Asylum Permit.
Copy of your guarantor's Identity document (under 21yrs)
Fully completed registration form.
Full payment of registration and admission fees.
Two ID photos (where applicable)

PTI BANKING DETAILS:

BURGERFORT/POLOKWANE CAMPUS	Account Name: Polokwane Tech Bank: Standard Bank Branch: Rosebank Branch Code: 004205 Account Number: 422251208 Ref: Student Name/No
	Account Name: Polokwane Technology Institute Bank: Nedbank Branch Code: 195005 Account Number: 1096661209 Ref: Student Name/No.

VISION STATEMENT

Our Vision as a private FET in South Africa is to be a top-class institution in the pursuit of knowledge through teaching, learning, research and exemplary service to humanity.

MISSION STATEMENT

To produce learners who are imbued with the fear of God and sense of service to humanity and who are equipped with a well-rounded education to enable them operate successfully and contribute positively in the public and private sectors of the nation's economy.

STUDY MATERIAL:

All study materials are to be bought from the college. A list of all modules you will require for the course together with costs, are available from the college registration office

MODE OF DELIVERY

All courses are conducted in English ONLY, and Face to Face in the classroom. Should a learner have difficulty in the use and understanding of the English Language, the college offers a bridging language proficiency course at the expense of the learner.

TUITION FEES:

In order to help our community, Polokwane Technology Institute (Pty) Ltd offers a flexible way of paying fees. You can pay a deposit or not, the choice is yours, together with your registration fees and the first month's fees — and then you can get started (please Refer to the COURSE FEES page for full details). All fees are Payable by the first day of every month. Where the fees of two or more learners are paid by the same parent, such a parent will be offered a fee discount of 10% for each of the learners registered. We encourage parents to pay fees directly into the college's Bank Account. Please use student numbers as your reference and then Fax the deposit slip to the college. NB. Fees exclude study materials.

CANCELLATION POLICY:

It is important that learners/ parents read and understand the cancellation Policy contained in the Polokwane Technology Institute (Pty) Ltd Registration Form. This can be found under # 2 of the enrolment Terms & conditions. All registered learner will be bound to those Terms & Conditions.

ACCOMMODATION:

PTI (Pty) Ltd endeavors to find accommodation for all our learners, but this is on a first come, first served basis. Please inform the Academic Registrar well in advance should you require accommodation. Be Informed that the accommodation costs are not included in the fees.

FEES SCHEDULE 2021

ENGINEERING PROGRAMS – N1- N6

REGISTRATION	MONTHLY	TOTAL
R 2 250 once-off	R950	TRIMESTER

BUSINESS STUDIES N4-N6

REGISTRATION	MONTHLY	TOTAL
R 2 250 once-off	R950 x 6	R7 700

MICT SETA COMPUTER PROGRAMS

REGISTRATION	MONTHLY	BOOKS	TOTAL
R1 500	R950 x 10	R2 000	R13 000

FOOD/BEV SETA PROGRAMS

REGISTRATION	MONTHLY	BOOK
R 1 500	R950	R1 000

AGRICULTURE PROGRAMS (AGRISETA)

REGISTRATION	MONTHLY	BOOK
R 1 500	R950	R1 000

MATRIC RE-WRITE

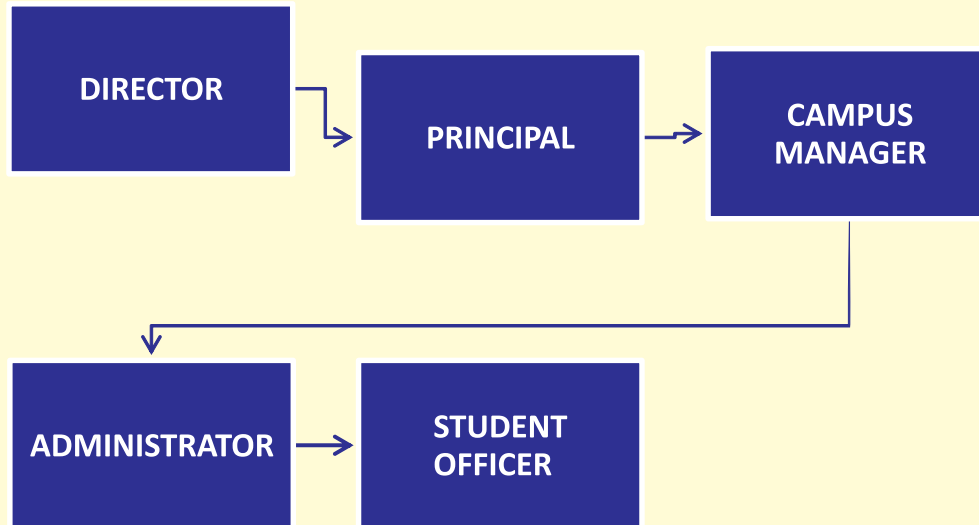
REGISTRATION	SUBJECTS	MONTHLY	TOTAL
R1 500 once-off	1 subject	R600 x 9	R6,900
	2 subjects	R650 x 9	R7,350
	3 or more	R700 x 9	R7,800

NOTE: 1st payment will due from 1st of February each year

PLEASE NOTE THAT REGISTRATION INCLUDES EXAMS FEE, STUDENT CARD, COLLEGE T-SHIRT AND IT IS NON-REFUNDABLE.

We also offer: Evening /Saturday classes (16H30 to 18H30) and English lessons for those who cannot speak the language

COLLEGE GOVERNANCE



BUSINESS STUDIES: N4 - N6		
HUMAN RESOURCE MANAGEMENT	MARKETING MANAGEMENT	PUBLIC RELATIONS
N4-N6 Computer Practice Personnel Management Entrepreneurship & EBM Management Com Labour Relations	N4-N6 Computer Practice Personnel Management Entrepreneurship & EBM Management Com/ Sales Management Marketing Management	N4-N6 Office Practice Information Processing Entrepreneurship Management Com
MANAGEMENT ASSISTANT	BUSINESS MANAGEMENT	FINANCIAL MANAGEMENT
N4-N6 Office Practice Information Processing Computer Practice Public Administration Communication / EBM Financial Accounting	N4-N6 Computer Practice Personnel Management Entrepreneurship & EBM Management Com/ Sales Management Marketing Management	N4-N6 Financial Accounting Entrepreneurship. & Business Management Management Communication Computerised Financial System
TRAVEL AND TOURISM	LEGAL SECRETARY	PUBLIC RELATIONS
N4-N6 Tourism Destination Travel Services Tourism Communication Travel & Office Procedure	N4-N6 Legal Practice Office Practice Public Administration Information Processing	N4-N6 Office Practice Information Processing Entrepreneurship Management Com
NATIONAL DIPLOMA: EDUCARE (TEACHING)		
N4 Day Care Personnel Development Education educare Didactics Child Health	N5 Day Care Communication Education Psychology Educare Didactics-Theory & Practical Entrepreneurship & Business Management	N6 Day Care Communication Education Psychology Educare Didactics-Theory & Practical Day Care Management
FOOD/BEV SETA NQF 1-3		AGRICULTURE (AGRISETA) NQF 2-4
NQF2 Can Handling, Personal Hygiene, Safety, Health in a food Canning Environment NQF1 Hygiene, Safety and Health Principles for handling of Fresh, chilled and frozen seafood NQF1 Good Manufacturing Practices NQF3 Good Storage and Distribution Practices		NQF4 Animal Production NQF4 Plant Production NQF2 Poultry Production NQF2 Horticulture

ENGINEERING STUDIES:

ENGINEERING STUDIES N1-N6

MECHANICAL ENGINEERING N1 –N6	ELECTRICAL ENGINEERING N1-N6	CIVIL ENGINEERING N1-N6
Engineering science	Engineering science	Building administration
Mathematics	Mathematics	Mathematics
Mechanical draughting	Electro-technics	Building & structural surveying
Mechanotechnic	Industrial electronics	Building & structural construction

CHEMICAL ENGINEERING

N4	N5	N6
Chemistry	Mathematics	Mathematics
Chemical operation	Chemistry	Chemical plant operation
Mathematics	Chemical plant operation	Chemical technology
Engineering science	Engineering physics	Engineering physics

IT DEPARTMENT (COMPUTER COURSES)

END User Computing (Business IT)
SAQA ID: 49077. NQF Level 3: 1 Year)

National Certificate: Technical Support
(PC Engineering)
SAQA ID: 78964 NQF Level 4

National Certificate: System Development
(Programming) SAQA ID: 78965 NQF Level 4

National Certificate: System Support (2 Years)
(PC Engineering) SAQA ID: 48573 NQF Level 5

National Diploma: Business Analysis
SAQA ID: 63909 NQF Level 6 (2 Years)

Matric Rewrite:

- ◆ English
- ◆ Mathematics
- ◆ Maths Literacy
- ◆ Physical Science
- ◆ Life Science
- ◆ Business Studies
- ◆ Geography
- ◆ Accounting
- ◆ Biology
- ◆ Life Orientation
- ◆ History
- ◆ Economics

ACADEMIC PLAN

COURSE	What you will receive
Classes commence in January Matric Re-Write	Year Planner Study Guides Past Paper Questions With Memos Assessment Plan And Schedule
Classes commence in January N1 – N6 Engineering Studies Technical Matric	Year Planner Revision Study Guides Past Paper Questions With Memos Assessment Plan And Schedule
Classes commence beginning of February N4 – N6 Business Studies	Year Planner Study Guides Past Paper Questions With Memos Assessment Plan And Schedule
Classes Commence beginning of February IT (NETWORKING, PROGRAMMING, PC ENG) END USER COMPUTING	Year Planner Learner Guides Assignments Assessment Plan And Schedule